



The Padma



January 2022

Berkeley Buddhist Temple Newsletter

Web-Edition

In This Issue:

January Calendar	2
Dates to Remember	3
Temple Announcements	4
Shotsuki Memorial Service.....	8
President's Message	9
Rev. Kuwahara.....	10
Diane Ames.....	12
Dharma School.....	13
Membership & Toban.....	14
BCA Announcements.....	16
BCA-CBE	17
Condolences	18

Guidelines:

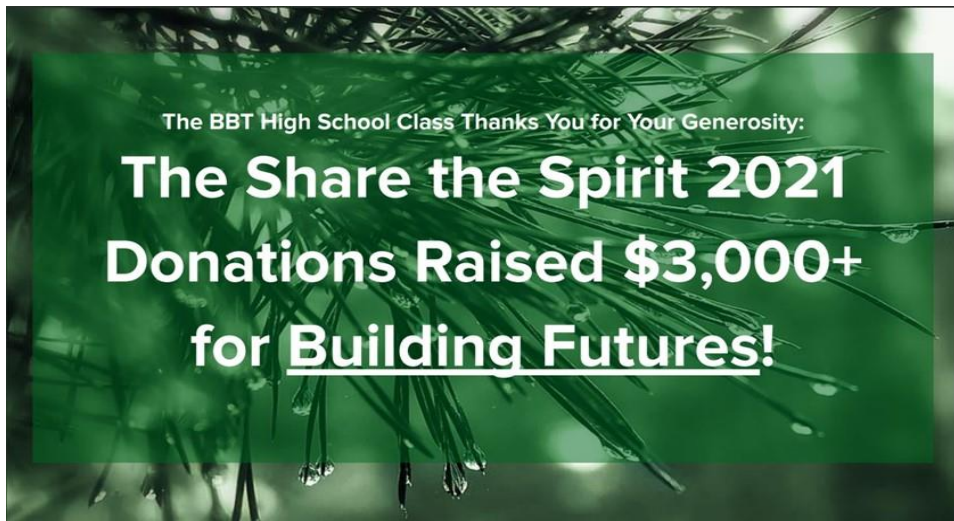
The Padma welcomes articles from sangha members.

Articles should be around 500-600 words typed. Word documents are best; PDF documents are discouraged.

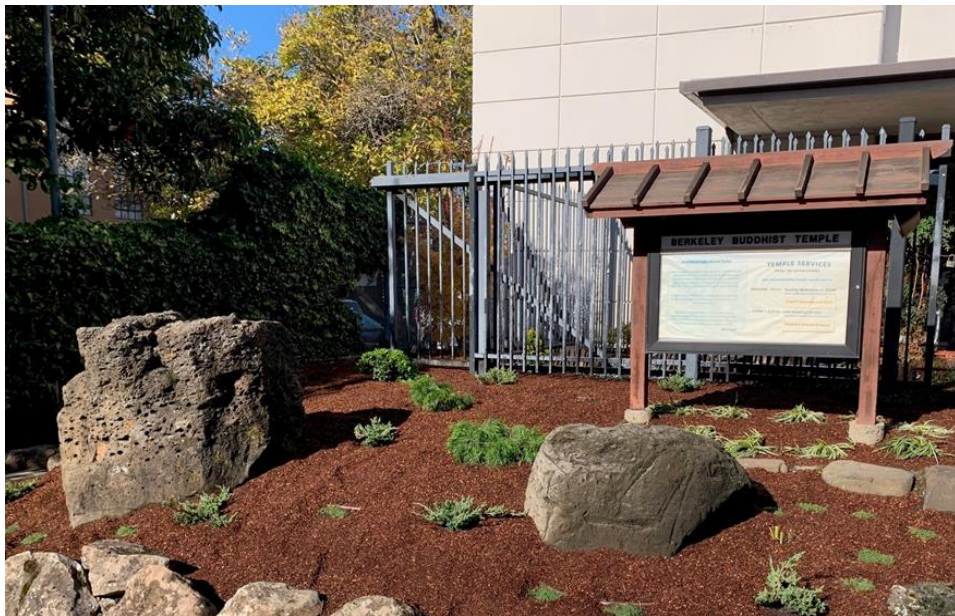
Please include your name, a title for the article, and include any photos. Cite references if quotes are used.

Articles will be reviewed for content and length, and should contain information relevant to Buddhist teachings, the Berkeley Buddhist Temple, and/or the Buddhist Churches of America. Publication will be at the discretion of the editorial board.

Email submissions to
padma@BerkeleyBuddhistTemple.org.



A Fresh Start to the new year. See "BBT Gardem Renewal" on page 7 for details.



Our Vision
A Community Where Our Spiritual Life And True Self Can Be Realized

Our Mission
To Live A Life Of Joy In The Nembutsu And Share The Dharma With Others

January 2022

the Padma



BERKELEY BUDDHIST TEMPLE			2121 CHANNING WAY, BERKELEY, CA 94704			
SUN	MON	TUE	WED	THU	FRI	SAT
						1 10:00a Gantan-E Service
2	3	4	5 7:00p Virtual Meditation	6	7	8
9 9:30a Virtual & In-Person Dharma Family & Shotsuki 10:30a New Year Party	10	11 7:00p Board of Director's Meeting	12	13	14	15 <i>Padma Articles Due</i>
16 9:30a Virtual & In-Person Dharma Family Service 10:15a Virtual Yoga	17	18 Padma Newsletter Production	19 7:00p Virtual Meditation	20	21	22
23 9:30a Virtual & In-Person Dharma Family Service	24	25	26	27 6:30p Dharmanar	28	29
30 9:30a Virtual & In-Person Dharma Family Service	31			Berkeley Buddhist Temple (510) 841-1356 berkeleybuddhisttemple.org info@berkeleybuddhisttemple.org facebook.com/berkeleybuddhisttemple youtube.com/berkeleybuddhisttemple		



Dates to Remember

D E C E M B E R	Thu 30 Dec	Virtual BBT Dharmanar (Online Study Session; Topic: Impermanence)
	Fri 31 Dec	In-Person & Livestream Joya-E / New Year's Eve Service
J A N U A R Y	Sat 1 Jan	In-Person Gantan-E / New Year's Day Service
	Sun 2 Jan	<i>No Service</i>
	Wed 5 Jan	Virtual Evening Meditation
	Sun 9 Jan	In-Person & Livestream Dharma Family & Shotsuki Service New Year Party
	Sun 16 Jan	In-Person & Livestream Dharma Family Service Virtual Yoga
	Wed 19 Jan	Virtual Evening Meditation
	Thu 27 Jan	Virtual BBT Dharmanar (Online Study Session; Topic TBD)

Join Us to Ring in the New Year!

BERKELEY BUDDHIST TEMPLE'S NEW YEAR'S CELEBRATION



Dharma Family Service & Shotsuki Hoyo Service
Installation of Officers
January 9, 2022

In-Person & Livestream Starting at 9:30 am

Enjoy the sounds of the taiko drum with a performance from members of Jiten Daiko during our Livestream YouTube service.

After the service Alan Hirahara will be onsite to cook a special dish and BINGO and prizes will be back by popular demand!
Visit sanghaevents.info/NYCelebration

To join us for the New Year's festivities in-person, please register early. Seating is limited to 24 people in the Hondo & 22 people in the Social Hall. Online reservations required for indoor seating at <https://sanghaevents.info/RSVP>



Dear BBT Members and Community,

With 2022 upon us, the Fundraising Committee considered how to approach our Satsuki Bazaar in the coming year. After deliberating and discussing within our committee, with the Bazaar Chairs, and with the Board, we decided that we will suspend the Satsuki Bazaar in 2022.

We arrived at this decision due primarily to our desire to put the safety of our Sangha first as the Bazaar requires commitments far in advance of the event itself and there still exists great uncertainty regarding the state of public health protocols in California and in the area.

That being said, we are still planning and are working to produce an alternative event to occur in May, possibly during the Satsuki Bazaar Weekend (5/21-5/22). So please stay tuned!

Thank you for your continued support of Berkeley Buddhist Temple and should you have fundraising ideas, please reach out to us at fundraising@berkeleybuddhisttemple.org.

The Berkeley Buddhist Temple Fundraising Committee



VFD HOME | ABOUT | RESOURCES

Welcome to the Bay District Junior Young Buddhist Association Virtual Food Drive

Hello everyone!

This year, as a way to give back during the holiday season, the Bay District Jr. YBA is conducting a virtual food drive through the Alameda County Foodbank. Since the holidays can be a time of economic stress and food insecurity, we are excited to help support this important cause.

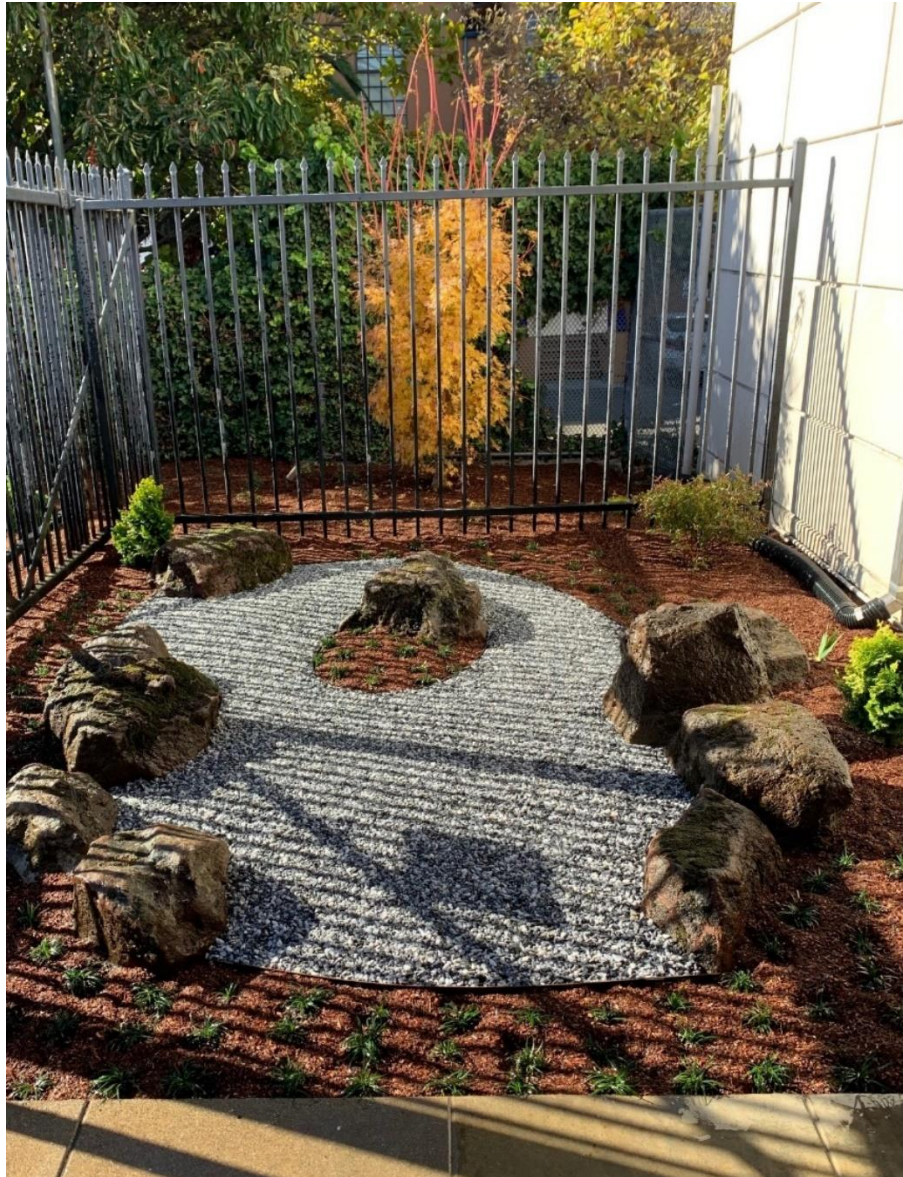
Ways to donate:

- Visit our [virtual storefront](#) and click shop/donate to go to our store
- [Start shopping](#) right away (you have the option to purchase specific items or just give an overall amount)
- Mail a check to the ACCFB --- Attn: Development Department PO BOX 2599 Oakland, CA 94614 (Please write "Bay District Junior Young Buddhist Association" in the memo line of the check.)

This food drive will be open **from December 5, 2021 to January 17, 2022**. Please help us reach our goal of \$1000! Even a donation of \$1 can help provide 2 healthy meals to an individual in need.

In gratitude,
Zora Uyeda-Hale
Bay District Historian

BBT Garden Renewal



While we have been away, the temple premises have been refreshed with new landscaping. The use of climate appropriate plants, water conservation, and ease of maintenance were all considerations in the newly installed front garden and courtyard. The project was managed by the Garden Renewal Committee: Judy Fujimoto, Wes Fukumori, Bradley Menda, and Rumi Taylor, designed by Sue Oda, Landscape Architect, and constructed by Golden Earth & Stone Landscaping.

As the new plants take hold, we look forward to welcoming everyone with a spot of peace and tranquility.

COMBINED DHARMA FAMILY SERVICE & SHOTSUKI MEMORIAL SERVICE

Sunday, January 9, 2022

9:30 am

Live Stream: <https://www.berkeleybuddhisttemple.org/dharma-live>

The following persons will be remembered during the Shotsuki Hoyo (monthly memorial service) for
January.

Patricia Kaoru Abe-Calef	Tad Kawamura	Emiko Shimada
Charles Tokiuchi Aoki	Toku Kimura	Calvin Carl Steimetz
Masako Doi	Toshio Kenneth Kono	George Jiro Sugihara
Masako Egawa	Mitsuko Kono	Iwao Lewis Suzuki
Chika Takasaki Fujikawa	Uhachi Kubo	Sada Takahashi
Shima Fujioka	Shizuo Ken Kurakazu	Sachio Takeda
Lily Yuriko Fujioka	Grace Marie Lindquist	Sally Tamie Takeda
Isamu Fujita	Mary Misako Maekawa	Chotaro Taketa
Goroku Furukawa	Menichiro Marubayashi	Bumtaro Takita
Hidemi Furuzawa	Kikuyo Marubayashi	Takuma Tanada
Yoneo Tom Futatsuki	Roy Maru Marubayashi	Kunika Tom
Leonce Gervais	Chitoye Louise Matoba	Mitsue Toriumi
Therese Guilbert	Tsuyo Matsui	Ronald Uchiumi
Rev. Gyodo Haguri	Shigeji Matsumoto	Sam Takenoshi Uchiumi
Tamekichi Haraguchi	Akie Mayeda	Rose Chiyo Uda
Fusa Haraguchi	Yoshiko Muranishi	Shikano Umawatari
Seitaro Hataye	Katsumi Nakagaki	Shawn C. Utsumi
Masami Sam Hataye	George Y. Nakahara	Iyono Wakaye
Catherine Yoshiye Hiraga	Shirley Isao Nakahara	Mamoru Wakida
Takeo Hirahara	Lawrence S. Nakano	Mary Wakida Budhiman
John Jitsutaro Hiramoto	Jiro Nakaso	Rev. Ryujo Yamada
Ann Yoshiko Imada	Kimiko Nishimoto	Mike Minoru Yamamura
Tomomi Ito	Masayo Nitta	Ichitaro Yamasaki
Rev. Kakusho Izumi	Nancie Haruko Oda	Matsue Yamasaki
Tokuo Izumi	Chiyono Okimoto	William Mamoru Yamasaki
Kimi Kami	Fumiyo Okita	Kimi Yamashita
Hisashi Kaneko	Sangoro Ouye	Rev. Seishin Yamashita
Kojiro Kaneshita	David Hiroshi Sano	Sam Masaji Yamoto
Masakazu Kawaguchi	Kimiko Sasaki	Frank Yokoi
Masa Kawai	Kimiko Sato	Minoru Yonemura
		Yuhei Yoshiura

Note: If there are any additions, corrections, or deletions to the above list, please notify the Berkeley Buddhist Temple at 510-841-1356.



President's Message

by **Bradley Menda**



2021 has been another challenging year. I hope that you and your loved ones have remained safe and healthy. On behalf of the temple leadership team, I would like to once again thank you for your continued support and patience as we continually adjust temple operations due to the everchanging nature of the Coronavirus. I am happy to announce that we resumed our first in-person Dharma Family Service during the month of November. I would like to thank all the members of the temple's COVID-19 Response Committee for the countless hours spent practicing and preparing for our reopening. We welcomed over 30 individuals back during our first in-person service in November. Thank you to committee members Judy Kono, Robin McGuire, Rumi Taylor, Jeff Nagafuji, Ryan Matsuda, and Rev. Kuwahara for helping us safely and successfully reopen our temple. If you do not feel comfortable returning to in-person activities yet or are unable to physically come to the temple, please remember that we will continue our virtual offerings as well. The choice is yours. Either way, we would love to "see" you at future temple events.

With the new year quickly approaching, 2022 will bring about a few changes to our temple leadership team. With the new year, we will say goodbye to long time board members Lucy Hamai, Kiyoshi Katsumoto, and Emiko Katsumoto. Each of these individuals have done so much to shape our temple into the successful institution that it is today. It has been a privilege and honor to work beside them. Their experience, guidance, and leadership will be greatly missed. Words cannot express the amount of respect and appreciation that I have for these three individuals. With their departure, we are in the process of filling their vacant seats. I am happy and excited to announce that Courtney Fujikawa, Sara Jotoku, and Karen Kato will be running for their vacant seats. I would like to thank each of them for volunteering to run for the vacant director seats. Please remember to submit your ballot for the 2022 Board of Directors, if you have not already.

As we wrap up the month of December, I would like to once again thank everyone for your support of the temple. Our temple would not be what it is today without each of you. Please remember to join us (in-person or virtually) on December 31st for our year end gathering Joya-e service. On January 1st, please join us (in-person only) to welcome in the new year at the Shusho-e service. Dharma Family Services will resume on Sunday, January 9th. On behalf of the temple's Board of Directors, I would like to wish each of you a safe, healthy, and Happy New Year. I hope to be able to see you in-person or virtually at future temple events.

Gassho,
Bradley



“I Will Await You in the Pure Land”

by Rev. Kuwahara



My life has now reached the fullness of its years. It is certain that I will go to birth in the Pure Land before you, so without fail I will await you there.

(Collected Works of Shinran, p. 539)

Some of you might have received the information that Rev. Masanori Watanabe, who was a resident minister of the Oxnard Buddhist Temple, attained birth in the Pure Land on November 26th. A couple years ago, he was diagnosed with pancreatic cancer. He left the ministry and returned to Japan to focus on his treatment. I am sure that Rev. Watanabe, his family, the medical staff, and temple members did their best, but his life in this world ended at the age of 48.

I first met Rev. Watanabe in 2011 when I was invited to the New York Buddhist Church as a guest speaker. Although he was an ordained minister, he lived as an artist in New York at that time. Because of his ministerial background, he sometimes helped the New York Buddhist Church as an assistant. After the service, Rev. Watanabe and I had dinner and drinks together. I was impressed with his deep understanding of the teaching and his strong passion for Jodo Shinshu Buddhism. He and I talked about the importance of spreading the Jodo Shinshu teaching to the world. Although that day was the first time we met, we had a really wonderful time.

In August 2012, Rev. Watanabe came to Berkeley to participate in the International Ministerial Orientation Program (IMOP), a 3-month training program for Japanese ministers who want to become Kaikyoshi ministers to serve Jodo Shinshu temples outside of Japan. As a program director, I spent 3 months with him. Rev. Tomioka and Rev. Kawagoe were also IMOP participants at that time. They are now serving at temples in Hawaii.

After completing IMOP training, Rev. Watanabe became a Kaikyoshi minister and was assigned to the Oxnard Buddhist Temple. We met a couple of times a year on the occasions of Minister's Summer Retreat, BCA National Council Meeting and so forth. I always appreciated his strong chanting voice and his passionate and deep Dharma messages.

I sometimes called or emailed him during his treatment. He kindly shared some of his art works. The image of Shinran Shonin, below, was painted by him. One time, he said he had difficulties and challenges due to the treatment, but he felt supported by the teaching of Jodo Shinshu.

When I heard of his passing at the end of November, I was shocked and sorry for his death at such a young age. However, the passage quoted at the beginning of this article somehow came to my mind.

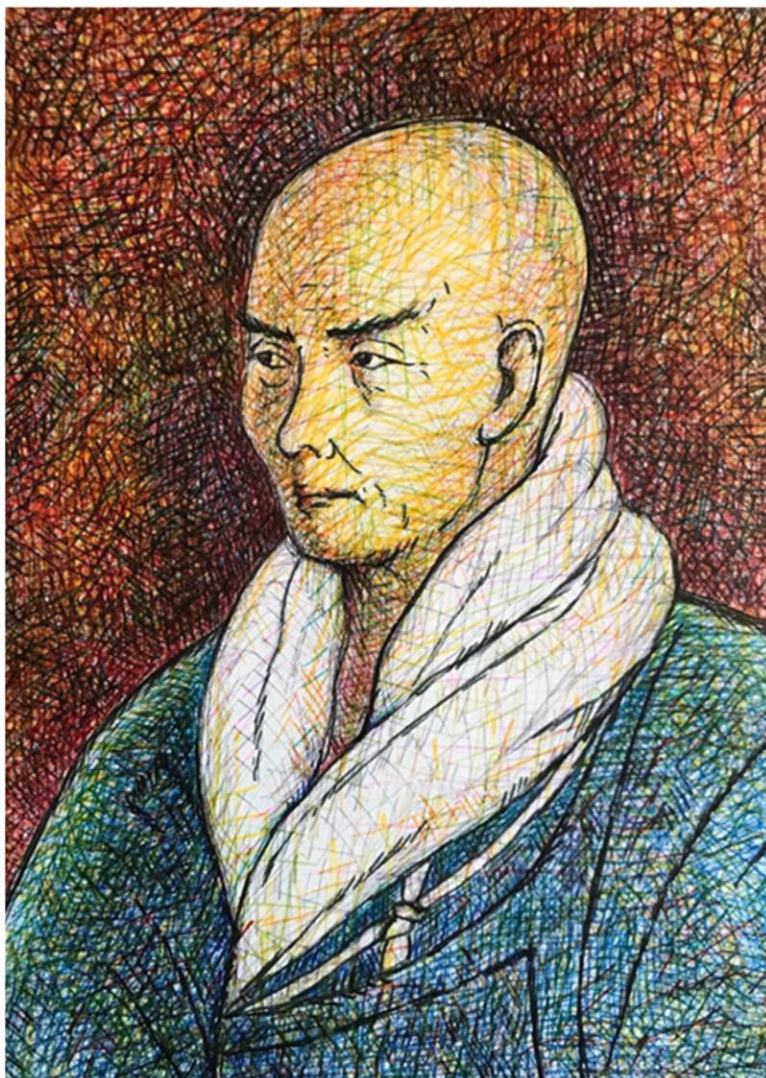
Shinran Shonin (1173-1263), the founder of Jodo Shinshu Buddhism, wrote many letters to his followers. About 20 letters are extant and the passage quoted above is from one of them. Although the year is not indicated in the letter, it is thought that Shinran Shonin was between 85 and 87 years old when he wrote it.

Rev. Watanabe completed his life in this world and attained birth in the Pure Land to start a new life as a Buddha to benefit others. As Shinran Shonin says, according to the teaching of Pure Land

Buddhism, Rev. Watanabe, my grandparents, and my many other Dharma friends who passed away before me are in the Pure Land, and we can meet there again. I know that there are different ideas of afterlife and that some people are not comfortable with the idea of an afterlife or of meeting our loved ones and friends again. However, when I seriously and honestly think of how to deal with my own death or the death of loved ones, our Buddhist teaching of the Pure Land is helpful and emotionally comforting to me. I am sure that many people in the world have been helped or benefitted with this teaching.

I will continue to do my best to share the Jodo Shinshu teaching in anticipation of my future meeting with Rev. Watanabe, Shinran Shonin, Rennyo Shonin and all other Jodo Shinshu Buddhists who devoted their lives for the spread of the teaching.

In gassho (palms together),
Rev. Kiyonobu Kuwahara





“Crisis at the House of Methuselah Assisted Living Facility”

by Diane Ames

“You’re surrounded.!” bellowed the man from the Marin County Municipal Water District through a bullhorn. “We know that you watered the flowerbeds! Come out with your hands up!”

“The little old ladies of the garden club are defiant,” said the facility manager, who was desperately trying to mediate. “They say that at their age, their flowers are one of their few joys in life. Please, little old ladies!” he pleaded through the bullhorn, “I have enough problems!”

“You can say that again!” replied Anna Older, the spokeswoman for the garden club, “Dining room service is too slow and only one washing machine is working.”

“Don’t you understand that Marin County’s water situation is dire?” bellowed the man from the water district. “If we have another dry year, our reservoir may actually run dry. Outdoor watering has been forbidden. Families are being rationed to 65 gallons per person per day. Showers alone take about two gallons per minute, and there’s laundry and dishwashing and cooking and flushing the toilet and actually having water to drink.”

“We’re doing our best to conserve!” said Anna. “We’ve planted native, drought resistant flowers! And we’ve been forced to cut back on laundry because only one washing machine in this place is working. When are you going to replace the worn out washing machine?”

“There’s a supply chain issue,” said the manager. “Ladies, please think of the principle of interdependence. You depend on the efforts of countless others to bring you food, medical care, and, yes, water. And in this crisis, everybody depends on everybody else to conserve our dwindling supply of water.”

“Speaking of interdependence,” said Anna, “human beings are discovering that we still depend on nature. Being animals, we are completely dependent on plants, and most flowering plants, including the plants that produce our fruits and vegetables, depend on pollinators. Reckless human actions and now drought are killing off pollinating insects. Our unsprayed flowers are sustaining the local pollinators that both farmers and the ecosystem need.”

Everyone conferred. Finally the manager announced, “The water district has offered conditional amnesty. Water Regulation 22 states that outdoor watering is permitted if it’s done with a hand held watering can, preferably filled with recycled or salvaged water. If you’ll comply with this rule, they’ll supply recycled water and we’ll supply watering cans.” There were cheers as both sides claimed victory.





Dharma School

Berkeley Buddhist Temple

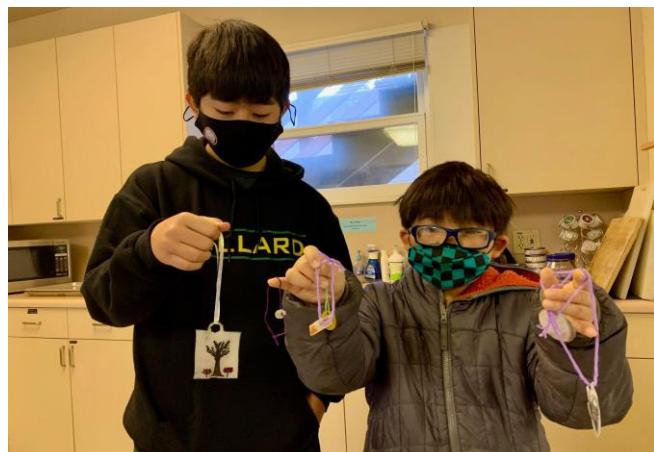
Dharma School Newsletter

January 2022

Happy New Year!



The High School class writes thank you cards to donors for this winter's Share the Spirit Fundraiser for [Building Futures](#).



Several students make shrinky-dink ornaments for their keiro recipients

Dharma School Responding to COVID

In November and December, we held several in-person classes. They were fun and interactive, and students and teachers felt good about the numerous safety protocols.

Out of an abundance of caution, the Dharma School will return to Zoom classes for the entire month of January. We will continue to confer with the Temple COVID Committee on a month-to-month basis as the pandemic situation develops.

January Calendar

Note: Please refer to this monthly calendar. Use this email if you need the Zoom link: bbtdharmaschool@gmail.com.

1/1/2022		Gantan-E; No Dharma School classes
1/2/2022		No Service; No DS classes
1/9/2022		DFS/January Shotsuki / NY Party; No DS classes
1/16/2022	Zoom	Regular DS classes
1/23/2022	Zoom	Regular DS classes



Membership & Toban

Membership Pledges (Receiving Period: 11/13/2021 – 12/16/2021)

The temple would like to gratefully acknowledge the following members for their generous contributions:

2021:

Richard Adachi, Tony Hale & Stacy Uyeda, Akemi Hamai & Amy Haruyama, Scott & Antonia Glenn Horstein, Vernon & Karen Kaldunski Kato, Jon Kawamoto, David Lyon & Tina Iwasaki, Ryan Matsuda, Bob Matsueda & Ranko Yamada, Fumiye Mayeda, Art Mayeno, John & Irene Murashima, Evelyn Nakano Glenn, Aki & Emi Nakao, Judy Nakaso, James & Jane Nehira, Dennis & Mary Okamura, Beryl Potter, William Siebold, Dennis & Kathleen Yee, Florence Yokoi

2022:

Dina Honda

The temple would also like to welcome two new college members, Lia Tristan, and Devon Akiyama. Here is a little bit about Devon Akiyama:

My name is Devon Akiyama, and I am a freshman studying business/economics at UC Berkeley. I grew up attending the Buddhist Church of Florin and am looking forward to continuing my pursuit of the Dharma with you all at the Berkeley Buddhist Temple! I heard about the BBT both through the BYR (Buddhist Youth Retreat) program and meeting Zora Uyeda-Hale as well as meeting Bradley through the Menda family in Florin. Thank you so much for the welcoming entrance into the Sangha, and I look forward to joining you at more services to come!

Welcome to Sangha!

TOBAN

Coordinators - Lena Yin & Pat Takeda

January	February
Chair - Judy Kono Cochair - Emily Ushijima Cochair - Patty Fujiwara Cochair - Wes Fukumori Anzai, Michiko Fukumori, Wes Harada, Gail Hamamoto, Lesli Hirose, Paul Honda, Dina Kono, Judy Manning, Ron & Julie Kono-Manning Mori, Sam *Okino, Shizu *Oto, Makoto Potter, Beryl *Pohan, Chiyo Tristan, Lia Ushijima, David & Emily Wilmsen, Carl & Patty Fujiwara	Chair - Caroline Fernandez Cochair - Miki Adachi Cochair - Evelyn Nakano Glenn Adachi, Miki Dunford, CJ Fernandez, Willie & Caroline Glenn, Evelyn Nakano Hirahara, Alan *Kashiwagi, Sadako Lewis, Dii & Joyce Oishi *Matsubara, Don & Fumi Matsumoto, Rev David & Diane Matsuoka, Pam Menda, Bradley & Myron Jung *Nakashita, Chizuko Nehira, Jimmy & Janie Okamura, Dennis & Mary *Siebold, Bill *Yamauchi, Norma

* Denotes disabled and/or elderly. Toban duty optional.



BCA J.A.M.S.

Jodo Shinshu Artists & Musicians Showcase

-2ND ANNUAL BCA VIRTUAL TALENT SHOW

-Please support our talented
Sangha members

-Questions? email "Koichi"
bkmizushima@bcahq.org

EVENT DATE:
1:00PM PST

**JAN.09
2022**

REGISTER HERE FOR THE LINK:

<https://forms.gle/28GMBRR3Do9Hgo3V9>



FREE & OPEN TO THE PUBLIC ~ REGISTER FOR ZOOM LINK

CBE Seminars Online For All (SOFA) Series

Explore topics in Jodo Shinshu doctrine, practice, and culture

REFLECTIONS on the life and work of REV. GYOMAY KUBOSE

**SATURDAY,
JANUARY 22, 2022
11 AM - 1 PM (PST)**

GUEST SPEAKER:

REV. MARVIN HARADA
BISHOP, BUDDHIST CHURCHES OF AMERICA



Prior to appointment as the bishop of BCA in April, 2020, Rev. Harada served as resident minister of the Orange County Buddhist Church for over three decades. He is the author of *DISCOVERING BUDDHISM IN EVERYDAY LIFE*. Rev. Harada studied with Rev. Kubose as he embarked on his ministerial path, deeply inspired by his example.

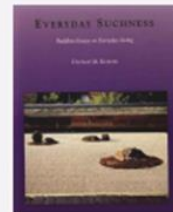
I have always dreamed of establishing an American Buddhism - different from Indian, Chinese, or Japanese Buddhism - a uniquely American Buddhism that could be easily understood and practiced by Americans and that would contribute to American life and culture...

- Rev. Gyomay M. Kubose



Rev. Gyomay Kubose
(June 21, 1905–March 29, 2000)

Author of *EVERYDAY SUCHNESS: BUDDHIST ESSAYS ON EVERYDAY LIVING* (1967) and other works.



Born in the U.S., Rev. Kubose spent his early years in Japan. He attended University of California at Berkeley, earned a degree in Philosophy in 1935, then went to Japan to study under his teacher, Rev. Haya Akegarasu at his Dai-Nippon Bunkyo-kenkyu-in... He returned to the US in 1941 just prior to World War II and spent two years in the Heart Mountain Relocation Camp in Wyoming... In 1944, he founded the Buddhist Temple of Chicago..."

Photos and excerpted from *Bright Dawn*

V11-11

Register online

<https://forms.gle/CjoU2aA6gRZAXp198>

Donations are gratefully accepted.

CONTACT: cbe@bcahq.org (510) 809-1460

Visit: <https://www.buddhistchurchesofamerica.org/buddhist-education>



Condolences

Berkeley Buddhist Temple expresses condolences and deep sympathy

To the Family of
Mrs. Kiyo Eshima

December 21, 1929 – November 26, 2021

Namo Amida Butsu

Namo Amida Butsu

Namo Amida Butsu



The following is a list of special service years.
If you have a departed relative who has passed away
in any of the listed years,
and would like to make arrangements
for a memorial service,
please contact Rev. Kuwahara at [\(510\) 841-1356](tel:5108411356).

2021 MEMORIAL SERVICE SCHEDULE

<u>YEAR</u>	<u>SERVICE</u>
2020	1 st Year
2019	3 rd Year
2015	7 th Year
2009	13 th Year
2005	17 th Year
1997	25 th Year
1989	33 rd Year
1972	50 th Year
1922	100 th Year

Services

Our regular Sunday program begins with a Chanting Service at 8:30am followed by a Family Service at 9:30am. A Dharma talk is available after the Family Service while Dharma School classes are convened for students.

Special Services

January 1 Service	Gantan-e	New Year's Day
February	Nehan-e	Nirvana Day
March	Ohigan	Spring Equinox
April	Hanamatsuri	Flower Festival
May	Gotan-e	Birthday of Shinran
July	Kangi-e	Obon
September	Ohigan	Autumn Equinox
November Memorial	Hoonko	Shinran Shonin
December	Jodo-e	Bodhi Day
December 31	Joya-e	Year End Service

A Shotsuki Hoyo (Monthly Memorial) Service is held the first Sunday of each month.

Dharma School

Our Dharma School (Sunday School) has classes from preschool through high school. Our teachers are happy to discuss the appropriate level of spiritual enrichment for your student.

Monthly Discussions

In our discussions, we strive to experience the Buddha-Dharma with our entire selves – with our bodies (quiet sitting and other forms of meditation), voices (chanting and other liturgy) and minds (study and discussion).

Our sessions focus on ways in which Buddhist teaching and practice can impact our everyday lives. Each session will take up a different topic and you are welcome to attend any or all sessions.

All interested persons are welcome to attend.

Visitor Information

Please feel free to ask any of our greeters for information. We are here to assist you with whatever level of participation you may be seeking.

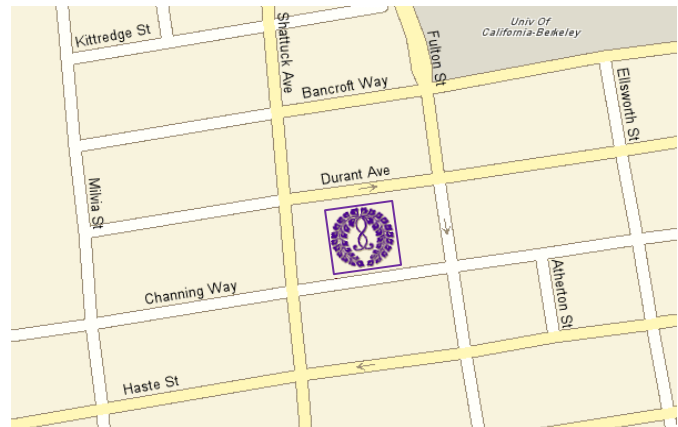
Whether you are here to satisfy a slight interest or to make a more personal connection, we wish you well and hope that you will be visiting us again soon.

Membership Information

Membership is open to all who view the Temple as their spiritual home and seek the Buddha-Dharma.

Kindly complete a [Membership Form](#), have your name entered in the membership roll and support the Temple through a pledge and participation.

For more information about becoming a member, visit our [Registration](#) page, or contact our [Membership Chair](#).



Berkeley Buddhist Temple

2121 Channing Way
Berkeley, CA 94704

Office Hours

Monday – Friday
10:00am – 1:00pm

[510-841-1356](tel:510-841-1356)

info@berkeleybuddhisttemple.org

berkeleybuddhisttemple.org

facebook.com/berkeleybuddhisttemple

youtube.com/berkeleybuddhisttemple