



# The Padma



April 2021

Berkeley Buddhist Temple Newsletter

Web Edition

### In This Issue

April Calendar.....	2
Future Dates to Remember.....	3
Satsuki Bazaar & Arts Festival..	3
How to Read Buddhist Sutras?, Rev. Kuwahara.....	4
Shotsuki Memorial.....	5
Wishes and Wishful Thinking, Diane Ames.....	6
Commemorative Services.....	7
Help Wanted.....	7
Dharma School.....	8
Keiro Package Rollout.....	9
Nitta Scholarship.....	9
Community Outreach.....	10
JYBA Bingo.....	11
Virtual Yoga.....	12
Cooking with Alan Hirahara.....	13
On Tolerance.....	14
Pledge.....	15
Toban.....	15
Condolences.....	16
Buddhism & Everyday Life.....	17
Bon Odori Webinar.....	18
Taiko Webinar.....	19
Socially Engaged Buddhism.....	20
Future of Jodo Shinshu.....	21
BYR Middle School Event.....	22

## The Path of Gratitude

by Jeff Wilson, Lion's Roar, November 2019

- ... in Shin Buddhism our main focus is the practice of gratitude cultivated through the Buddha's wisdom.
- We don't practice to achieve anything—not enlightenment, good karma, a favorable rebirth, or material rewards. We practice simply to give thanks for what we have received.
- Shin Buddhists believe that our capability to see beyond our own ego is provided by Amida Buddha, the limitless compassion and wisdom that benefits us all.
- With this awareness, Shin Buddhists say the *nembutsu* in gratitude to the Buddha.



High School Class Dharma Talk on Gratitude

### Hanamatsuri Service



April 11

### Pet Memorial Service



April 18

#### Our Vision

A Community Where Our Spiritual Life And True Self Can Be Realized

#### Our Mission

To Live A Life Of Joy In The Nembutsu And Share The Dharma With Others

# April 2021

SU	MO	TU	WE	TH	FR	SA
				1	2	3
4 <b>9:30a</b> Livestream - Dharma Family & <b>Shotsuki Memorial Service</b> <b>10:15a</b> Virtual Yoga	5	6	7	8	9	10
11 <b>9:30a</b> Livestream - Dharma Family / Hanamatsuri Service Guest Speaker: Rev. Grant Ikuta	12	13 <b>7p</b> Board of Directors Meeting	14	15	16	17
18 <b>9:30a</b> Livestream - Dharma Family / Pet Memorial Service <b>10:15a</b> Virtual Yoga  Padma articles due	19	20 <b>10:30a</b> Padma Newsletter Production	21	22	23	24
25 <b>9:30a</b> Livestream - Dharma Family Service	26	27	28	29	30	



# Future Dates to Remember

Sun  
4 Livestream  
**Shotsuki Memorial Service**  
Apr Virtual Yoga 10:15am

Sun Livestream  
11 Hanamatsuri Service  
Apr Guest Speaker: Rev. Grant Ikuta

Sun Livestream  
18 Pet Memorial Service  
Apr Virtual Yoga 10:15am

Sun 71<sup>st</sup> Annual  
16 Satsuki Bazaar &  
May Arts Festival

Sun  
23 Gotan-e Service  
May Guest Spkr: Rev. Ai Hironaka

Sun  
30 DS Awards and Graduation  
May

## Save the Date

### Satsuki Bazaar & Arts Festival Is Back!

Please save the date — Sunday, May 16 — for a special online 71st annual Satsuki Bazaar & Arts Festival.

An event is being planned now, with co-hosts, entertainment, fun — and a bento that will be available for pick up earlier that day.

As details become available, such as the hours and cost of the bento, they will be posted on the BBT website <https://www.berkeleybuddhisttemple.org>, the BBT Facebook page <https://www.facebook.com/BerkeleyBuddhistTemple>, and the Padma.

Stay well and safe!





# How to Read Buddhist Sutras?



On March 13, I gave a lecture on the Three Pure Land Sutras to the Kyoshi aspirants. In our tradition of Jodo Shinshu Buddhism, if those ordained pursue a path to become a full-fledged minister (Jpn. *kaikyoshi*), they need to be certified as a *Kyoshi* minister by the Hongwanji, our mother temple in Kyoto. There are currently 21 *Kyoshi* aspirants from BCA, Canada and European districts. Rev. CJ is one of them. They plan to go to the Hongwanji in the spring of 2022 to receive the *Kyoshi* certification. My lecture was a part of the training program before they go to Japan.

In my three-hour lecture, I explained some doctrinal points of the Three Pure Land Sutras. At the end of my handout, I shared an episode of a devout Jodo Shinshu follower, whose name was Shōma (1799-1871). He lived in Sanuki (Kagawa Prefecture today) and really appreciated the Nembutsu teaching. Because of his joyful and deep appreciation, he was quite famous in that area. However, some people envied his reputation. One of them was an assistant minister of Shōma's affiliated temple.

One day, this assistant minister tried to humiliate Shōma in the presence of other members during a service. He opened the *Larger Sutra*, one of the Three Pure Land Sutras, and asked Shōma to read it, knowing that Shōma was illiterate. Keeping his countenance, Shōma received the Sutra book and held it up. Then, some people started giggling. Shōma held the book upside-down because he, as a peasant, had never received education and didn't know how to read letters. However, without paying any attention to their giggle, Shōma started reading the *Larger Sutra* with loud voice: "Shōma, I will save you! I will save you!" Closing the Sutra book, he said with a smile to the assistant minister, "This is what is written in this Sutra."

The *Larger Sutra* expounds Amida Buddha. It is a long sutra with many philosophical thoughts and Buddhist doctrinal terms. But the core essence is really simple. This Buddha Amida has been working hard to guide and liberate us from *samsara* so that we will become a Buddha, one free from suffering and compassionately guiding those still in suffering in this *samsara*. Shōma, who didn't know even how to read letters, had no knowledge of those philosophical thoughts and doctrines. But his short words showed that he had wonderfully grasped the essence of this *Sutra* or perfectly heard the voice of Amida Buddha calling all beings through this *Sutra*.

What does it mean to read Buddhist sutras? In one sense, it means to read them literally. However, more importantly, it means to spiritually receive Buddha's messages of wisdom and compassion behind all those letters in sutras. Rennyō Shōnin (1415-1499), the eighth spiritual leader of Jodo Shinshu Buddhism, once said:

Some read Buddhist sutras. But they don't read them. On the other hand, some are not able to read Buddhist sutras. But they do read them. Even if one doesn't know how to read letters, if he/she encourages others to read Buddhist sutras, to listen to the Dharma or to attain shinjin, it should be said "Some are not able to read Buddhist sutras, but they do read them." On the other hand, even if some are able to read Buddhist sutras, if they don't truly grasp them or have no appreciation, it should be said "Although they are able to read Buddhist Sutras, they don't read them."

From Article 94, *Thus I have heard from Rennyō Shōnin*

For those who wish to become a *Kaikyoshi* minister, it is important to know the technical terms and doctrinal teachings in the *Three Pure Land Sutras*. However, since I thought it was more important to know how to read Buddhist Sutras, I concluded my lecture with the episode of Shōma. Of course, this is a very important lesson to myself, too. It is also my sincere wish that all people will be able to encounter and discover profound messages of the Buddha by reading Buddhist sutras deeply and spiritually, not superficially and literally.

In gassho (palms together),

Rev. Kiyonobu Kuwahara

# COMBINED DHARMA FAMILY SERVICE & SHOTSUKI MEMORIAL SERVICE

*Sunday, April 4, 2021*  
9:30 am

Live Stream Only: <https://www.berkeleybuddhisttemple.org/dharma-live>

The following persons will be remembered during the Shotsuki Hoyo (monthly memorial service) for *April*.

Shigetaro Adachi	Chiyo Ishikawa	Riu Oishi
Kinoe Adachi	Kanzo Iyama	Joe Oishi
Flora Tatsuye Adachi	Lily Kagawa	Makitaro Sakaki
Yoshino Ariyoshi	Michael Masayuki Kakesako	Shoichi Sawada
Douglas Itsuki Ariyoshi	George Kako	Matsutaro Takemori
Nobuko Mae Asami	Takeo Katayama	Masae Takeshita
June Michiko Chikasuye	Kikutaro Kimura	Hideo Taketa
Jack Shigetaro Ehara	Shunta Marubayashi	Kenichi Tokuyoshi
David Flores	Chiyomi Masuda	Yoshimi Toyota
Dirk Sei Fujii	Yemiko Masunaga	Alice Toshiko Tsukimura
Hiroshi Fujikawa	Kimiyo Matsui	Baby Boy Umawatari
Juzaburo Furuzawa	Tsutomu Matsumoto	Izumi Uyeda
Rose-Annette Gervais	Hideaki Matsunaga	James Wakida
Toshiko Tomaru Goodman	Victoria Mizuhara	David Susumu Watanabe
Takekuni Hino	Torao Tony Mizusaki	Takeo Yamada
Yoshio Hiramoto	Toshio Morishita	Yonosuke Yokoyama
Hisako Hazama Hirose	Arthur Hajime Nakamura	Katsuji Yokoyama
Hiroichi Hishida	Virginia Tomie Nakaso	Hideichi John Yoshida
Toyoye Ichiyasu	James K. Nishimoto	Hisayo Yoshimura
Soka Ikemoto		

Note: If there are any additions, corrections, or deletions to the above list, please notify the Berkeley Buddhist Temple at [510-841-1356](tel:5108411356).



# Wishes and Wishful Thinking

by Diane Ames



Chicken Little got a telephone call from his cousin in Texas, Rory Rooster. “You’ve got to come to Texas!” Rory crowed. “The whole COVID business, the masks, the restrictions, the closed bars, that’s all over here! Bye now, I’m going bar hopping!”

“COVID’s not over yet, even though you obviously want it to be!” protested Chicken Little. “Cases are still much too high! And you’re not even vaccinated yet! Since chickens don’t live to be 65, none of us are! Neither are most humans, for that matter!” But Rory had hung up.

On his daily walk, Chicken Little was almost knocked flat by a big herd of pigs who were trotting to a party and chanting, “COVID’s over, no more masks! Beer and pizza’s all we ask!”

“It’s not over yet!” Chicken Little shouted. “There were 1500 deaths yesterday, and that was a pretty typical day! You just want to party!” But the pigs did not even pause.

As Chicken Little picked himself up, along came his friend, Paula Pullet. “Guess what!” she said. “Now that this COVID thing is just about over, I’m flying to Hawaii on Tuesday (on a plane, of course; chickens can’t fly very far). I’ll drink mai tais and watch the feral chickens there perform hula dances. I’ve been so longing to travel all this miserable year!”

“I know how much you want to travel, Paula,” said Chicken Little. “But that hasn’t made COVID disappear! There’s progress, but the CDC is afraid we may have another surge before it’s over. And Dr. Fauci says that unnecessary travel is still not a good idea.”

“Oh, that old wet blanket!” said Paula. “The most exciting thing he’d let me do is invite a friend over for coffee. And that is only when I’m fully vaccinated! And as for you, just because your whole family got it and you almost lost your grandmother, you don’t have to be a nut on the subject!”

“Don’t forget my uncle, who’s a COVID ‘long hauler’. He wasn’t even all that sick with the disease, but for three months now, he can’t even crow at dawn. The CDC website says that lots of COVID patients, many of whom had mild cases, have gotten this horrible long COVID.”

By way of an answer, Paula rolled her eyes.

Exasperated and frightened, Chicken Little ran through the streets squawking, “A surge is coming, a surge is coming!” Let’s hope he was wrong.

Buddhist moral: Our desires can lead to wishful thinking, and wishful thinking can risk disaster for ourselves and other people, sometimes for lots of other people.



# Commemorative Services

**APR  
11**

## Livestream HANAMATSURI SERVICE GUEST SPEAKER: REV. GRANT IKUTA

Kambutsu-e commemorates the birth of Siddhartha Gautama who attained enlightenment as Sakyamuni Buddha. Colloquially referred to as Hanamatsuri (flower festival) in Japan, the observance includes ladling sweet tea over a statue of the baby Buddha in a flower altar (hanamido).

**APR  
18**

## Livestream PET MEMORIAL SERVICE

Our pets are Bodhisattvas that are nonjudgmental, give selflessly, show unconditional love and teach us about impermanence. We offer incense in their memory for the joy they have given us and the life lessons they have taught us.

Your thoughtful dana for these special observances can be made online through the temple website.

The Temple greatly appreciates your kind generosity.

[DONATE](#)

## Help Wanted

Are you someone with a talent or interest in any of these areas: journalism, layout & graphic design, writing, editing, or publishing? Are you looking for an opportunity to exercise your skills?

The BBT is looking for someone (or several “someones”) to assume the role of Padma editor. You would be supervising the publication of the temple’s monthly newsletter in its print and e-versions.

The Padma is a compilation of articles contributed from regular and special contributors, a calendar of temple activities, and special announcements. Familiarity with MS Word, Adobe Illustrator, and Google docs is helpful, but not necessary.

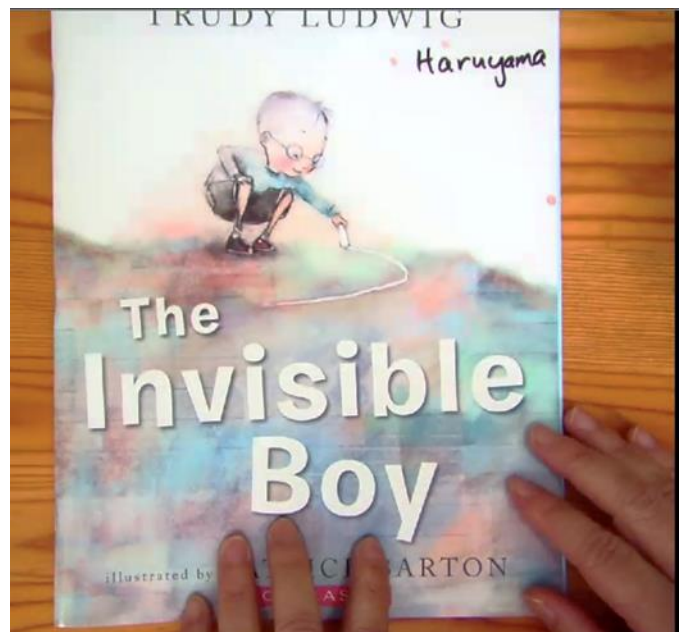
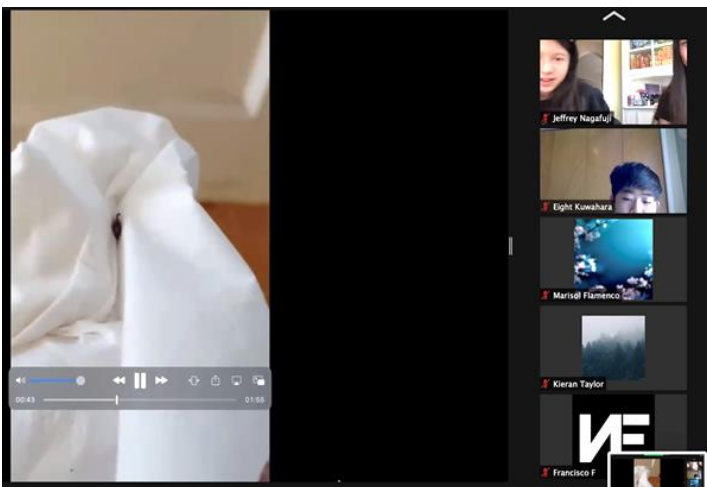
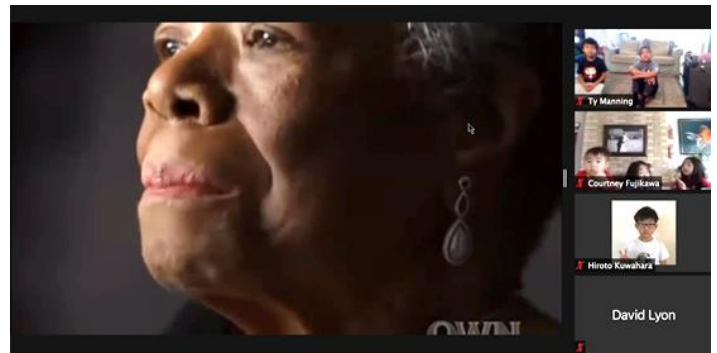
Please contact the temple office [info@berkeleybuddhisttemple.org](mailto:info@berkeleybuddhisttemple.org) if you are interested or know of someone who may be.





- Sunday, Apr. 4 : Regular Dharma School class
- Sunday, Apr. 11: No Dharma School; enjoy Hanamatsuri presentation by DS students
- Sunday, Apr. 18: Regular Dharma School class
- Sunday, Apr. 25: Regular Dharma School class

The Dharma School continues meeting on Zoom and enjoying each other's company! In March, we have thought about the compassion that it takes to save a bug's life (left-hand images) and how one's kindness transforms into someone else's gratitude, including Maya Angelou's reflection on how to "be a rainbow in someone else's cloud" (right-hand images).







# March Keiro Package Rollout



The 2nd care package of N95 masks, paper medical masks, mask lanyard, Okinawan soba, Organic dried nori, Double Happiness oranges, See's sucker and Dove chocolates, and Peppermint bark, a BDK calendar and Yo Hiraoka's origami animals were assembled at temple. Additional homemade treats of arare mix, and shortbread cookies which included a pressed cherry blossom cookie, macha and Hawaiian style shortbread! Such wonderful delicacies!!

Deep appreciation goes to the Keiro Care team that includes the members who assembled the bags, made the delicious treats and delivered the bags to the Keiro members.

The BBT Care Package Team includes Emi Nakao, Lena Yin, Yuki Otake, Denise Kaneshiro, Bob Akiyama, Patty Fujiwara, Linda Griffin, Aiko Kurokawa, Joyce Okimoto, Dennis Sakurai, Irene Asao-Wells, Robin McGuire, and Rumi Taylor.

Deepest gratitude to you all and to the Keiro members for your selfless support of the temple!

With Gassho, Mimi Kagehiro

# Nitta Scholarship

The Fred and Helen Nitta Scholarship was established with a generous donation of Mr. and Mrs. Fred Nitta of Watsonville, California to commemorate their twenty-fifth anniversary in 1964.

This award is to honor and give recognition to an outstanding Buddhist youth.

For more information, visit the [Nitta Scholarship site](#).



# Community Outreach

---

**[BAY \(Better Alternatives for Youth\) Peace](http://www.baypeace.org/about-us.html)** is a non-profit organization in Oakland that works to **empower youth** through leadership internships and other programming. BAY Peace centers its practice in listening to youth and community **voice to address their concerns and needs including incarceration**, police brutality, gentrification, and mass deportations. You can learn more at their website <http://www.baypeace.org/about-us.html>. If you want to support their efforts you can volunteer or [donate here!](#)

## **Community Outreach Announcements:**

Join us for our upcoming virtual events!

- **Sunday, March 21, 2021** @ after service: **Yoga** (*every 1st and 3rd Sunday after service*)
- **Sunday, April 4, 2021** @ after service: **Yoga** (*every 1st and 3rd Sunday after service*)
- **Sunday, April 18, 2021** @ after service: **Yoga** (*every 1st and 3rd Sunday after service*)

---

Many of you may know of the recent fire and vandalism to the Los Angeles Higashi Hongwanji. In a gesture of solidarity, the Executive Board of the BBT voted to donate \$100 to their rebuilding efforts. They received over \$80,000 towards their goal of \$30,000.

Hate crimes against Asian Americans rose almost 150% nationally in 2020. Especially vulnerable are our elders. Please consider supporting organizations that combat hate crimes against Asian Americans such as the following:

[Compassion in Oakland](#) - volunteers patrolling and protecting the community, formed in response to the surge of anti-Asian attacks in California's Bay Area. Those in need can go to their website to request a chaperone.

[Hate is a Virus](#) - started as a grassroots movement to combat racism and xenophobia against Asian Americans and Pacific Islanders (AAPI) fueled by COVID-19, Hate is a Virus has evolved into a sustainable organization that addresses xenophobia and hate in the AAPI and BIPOC communities.

[Stop AAPI Hate](#) - The Stop AAPI Hate reporting center tracks and responds to incidents of hate, violence, harassment, discrimination, shunning, and child bullying against Asian Americans and Pacific Islanders in California and, where possible, throughout the United States.



# BBT JYBA BINGO GAME



**MARCH  
28  
@1 PM**

**Come enjoy a fun temple  
themed bingo game hosted  
by the Berkeley Buddhist  
Temple JYBA!**



[REGISTER HERE!](#)



# BBT Virtual Yoga



Join us for a gentle yoga session by Hitomi Kuwahara that you can do while sitting on a chair or couch without a yoga mat. No experience or registration needed.

Everyone is welcome!

**Immediately after the service  
Sun. April 4th and 18th**

**at: <https://bbtevents.info/yoga>**

---

Berkeley Buddhist Temple  
2121 Channing Way Berkeley CA 94704  
1(510)841-1356  
[info@berkeleybuddhisttemple.org](mailto:info@berkeleybuddhisttemple.org)



YOU'RE INVITED TO  
**COOKING WITH ALAN HIRAHARA**



**Sunday, April 11th at 10:15 am**

**Visit <https://bbtevents.info/social> to join on Zoom!**

Alan is going to surprise us with one of his delicious dishes during our virtual cooking demonstration. After cooking with Alan, you'll have a chance to ask questions you may have to elevate your at-home cooking experiences!



I always enjoy Rev. Kuwahara's sermons and Padma articles. In particular, the essay he wrote for the December 2020 Padma caught my eye. He spoke about welcoming people into our Temple whose opinions we might disagree with - particularly given the recent political divide in America with respect to immigration, economic opportunities and racism. He emphasized that getting along with our friends and fellow Buddhists, with whom we share similar values and opinions is easy, but getting along with those whom we disagree - that's difficult, but essential. Buddhist values which include peaceful co-existence and equality are thereby affirmed, together with our own congregation's objectives of social justice and inclusiveness.

To quote from Rev. Kuwahara's January 24, 2021 sermon, we need to get past the destructive mindset of "I'm right and you're wrong". Particularly in our religious institutions, our goal should be mutual understanding, if not necessarily agreement. By not marginalizing others nor excluding them, we achieve greater cohesiveness.

When our goal is better understanding, our own tolerance is tested and hopefully affirmed. As our Rev. Matsumoto lectured: "try to think of your enemies as Bodhisattvas who are trying to teach you something". And as Rev. Kuwahara stated: "The Jodo Shinshu temple is the very place where we can receive the most effective remedy for racism and any other issues. If we close the door, those with racist views and thoughts would miss the remedy or have no clue for change".

The reality is that our well-meaning demands for greater diversity, social inclusion and liberalization of migration/immigration are not universal values. This is particularly so when it comes to current political hot button items, such as historical monuments and racial and cultural inclusion vs. those who greatly value tradition and homogeneity in their communities.

Everything cannot be boiled down to a dichotomy of right and wrong or good and bad, as our social values are inherently defined by shades of gray. I personally

discovered this while visiting the heartland of America a few years ago. People there were not naturally open to liberal viewpoints nor other religions. But this does not make them evil.

When we get past the current generalizations of equality and justice for all, and focus on the specifics, dilemmas arise. For example: we want everyone to receive the same opportunities and services, e.g. access to health care, education, food and shelter. But with limited resources, choices have to be made.

Associated with this is the reality that we're not all born equal, neither biologically nor intellectually. As a result, society is unequal and even unjust in its distribution of wealth and opportunities. And the decisions it must make are by definition discriminatory and debatable.

The utopian socialist ideal of taking from one's ability and giving to those in accordance with their needs has yet to be realized - nor will it come about with our new President and Congress. I'm old enough to remember significant political and social movements, which also set lofty utopian goals, advocated social changes and promised to address and provide for everyone's needs, only to fail when faced with the reality of limited resources and differing opinions.

If you have an in-group, you automatically have an out-group. With any group, e.g. your family or friends, city or state, by definition you have others outside of it. We may invite a person into our community or temple with good will, but the favor may not necessarily be returned. We may value everyone we meet, but that does not mean they will return the favor. We are faced with the question of how to deal with this reality, both inside and outside of the Temple.

These quandaries cannot be solved for us by our political leaders. Therefore we Buddhists must each be guided by our spiritual principles and teachings, which include tolerance for differing, even objectionable viewpoints.

Namo Amida Butsu



The Temple would like to gratefully acknowledge the following members for their generous contributions:

**2020 Membership Pledges**

Antonia Glenn-Horstein & Scott Horstein

**2021 Membership Pledges**

Lorin & Aaron Bond	Jeffrey Nagafuji & Lucy Rivello
Vicki & Gene Chin	Jerry Nagafuji
Georgia Daikai	Shizuko Okino
Sadako Delcollo	Makoto Oto
Rebekka Fisher	Doreen Sakamoto & Bruce Buchholz
Pauline Fong	Amy & Glenn Shinsako
Wes Fukumori	Karen Sugiyama
Ritsuko Ide	Mae Takeda
Erin Kagehiro Anoruo	Ron & Carol A. Tanaka
Nikki Lethridge	Rumi Taylor
Emiko & George Matsunaga	Jason Watson
Pam Matsuoka	Landon Yamaoka
Jeff & Robin McGuire	Elaine Yokoyama & Toshio Tsuda
Ron & Janet Cordova Miyake	
Leroy & Barbara Hedani Morishita	

The temple would also like to welcome new members

Aaron Bond  
 Rebekka Fisher  
 Erin Kagehiro Anoruo  
 Jason Watson

Welcome to our Sangha!

Thank you all for your generosity and continuing support.

If you have any questions, please contact Mimi Kagehiro at [membership@berkeleybuddhisttemple.org](mailto:membership@berkeleybuddhisttemple.org) or 510-841-1356.

**TOBAN**  
Coordinators  
 Lena Yin & Pat Takeda

**APRIL TOBAN**

Chair  
 Akemi Hamai  
Cochair  
 Bob Matsueda  
Toban  
 Diane Ames  
 Naomi Fukumori  
 Akemi Hamai & Amy Haruyama  
 Lucy Hamai\*  
 Scott & Antonia Glenn Horstein  
 Frank Kami\*  
 Keiko Kawakami  
 Bob & Ranko Yamada Matsueda  
 Paul & Sara Jotoku Nolan  
 Laurie Omori  
 Akira Roueche  
 Dennis Sakurai  
 Glenn & Amy Shinsako  
 Roy & Alice Wakida\*  
 Andy Yamashita

**MAY TOBAN**

Chair  
 Don Hamasaki  
Cochair  
 Judy Fujimoto  
 Barbara Hedani-Morishita  
Toban  
 Jenna Flamenco & Ken Golston  
 Bill & Judy Fujimoto  
 Don & Joanie Hamasaki  
 Yo Hiraoka\*  
 Dean Ito-Taylor & Lori Suzuki  
 Vernon & Karen Kato  
 Rev Kiyo & Hitomi Kuwahara  
 Ron & Janet Cordova Miyake  
 Leroy & Barbara Hedani Morishita  
 Steven Okano  
 Sadao Oki\*  
 Joyce Okimoto  
 Rumi Taylor  
 Russell Ware

\* Denotes disabled and/or elderly  
 Toban duties optional



Berkeley Buddhist Temple expresses condolences and deep sympathy

To the Family of  
Mrs. Hide Oshima  
February 23, 1921 - December 28, 2020

To the Family of  
Mr. Norman Hirose  
June 22, 1926 - February 22, 2021

Namo Amida Butsu

Namo Amida Butsu

Namo Amida Butsu

Berkeley Buddhist Temple apologizes for any confusion brought about by the error in the condolence citation of the March newsletter.



2021 MEMORIAL SERVICE SCHEDULE

The following is a list of special service years.  
If you have a departed relative who has passed away  
in any of the listed years,  
and would like to make arrangements  
for a memorial service,  
please contact Rev. Kuwahara at [\(510\) 841-1356](tel:5108411356).

<u>YEAR</u>	<u>SERVICE</u>
2020	1 <sup>st</sup> Year
2019	3 <sup>rd</sup> Year
2015	7 <sup>th</sup> Year
2009	13 <sup>th</sup> Year
2005	17 <sup>th</sup> Year
1997	25 <sup>th</sup> Year
1989	33 <sup>rd</sup> Year
1972	50 <sup>th</sup> Year
1922	100 <sup>th</sup> Year



# 2021 SPRING VIRTUAL NEMBUTSU SEMINAR

Sponsored by the Honolulu & Oahu Hongwanji Councils and the Office of Buddhist Education

## Buddhism & Everyday Life

Seeing Buddhism in our everyday life by looking at examples from Shin Buddhists whose everyday life experience was their greatest teacher, but based on their deep listening and foundation of the Dharma.

**Saturday March 27**  
9 am - 11 am (HST)

**FREE Registration**  
Deadline: Sat. March 20

**Featuring Bishop Marvin Harada (BCA)**  
of Orange County Buddhist Church where he has served since 1986.



### agenda

9:00 am: Welcome/Opening  
9:05-10:05am: Bishop Harada  
10:05 am: Break  
10:10 am: Q&A  
10:55 am: Closing/Mahalo

### donations

We welcome your donations, which will be earmarked to provide a copy of Bishop Harada's book, "Discovering Buddhism in Everyday Life" to all Honolulu/Oahu Hongwanji temples.

Please make donation checks payable to: Oahu Hongwanji Council. Mail registration form & checks to: Mililani Hongwanji, Attn: Nembutsu Seminar, P.O. Box 893308, Mililani, HI 96789

QUESTIONS? Please contact Mililani Hongwanji office (808) 625-0925

Name: \_\_\_\_\_

Temple/Affiliation: \_\_\_\_\_

Email: \_\_\_\_\_

Phone Number: \_\_\_\_\_

How did you hear about this Seminar? EMAIL | TEMPLE NEWSLETTER | TEMPLE WEBSITE | SOCIAL MEDIA

Circle one above OR if other, pls indicate here: \_\_\_\_\_

Questions for Bishop Harada: \_\_\_\_\_



**INNOVATIONS & CHALLENGES with  
BON ODORI ONLINE**

March 27, 2021 • 11:00 am – 12:15 pm PST

Featuring short presentations by five BCA temples followed by an open forum to share ideas and resources.

Temples:

San Jose, Sacramento, Pasadena, Seattle & Seabrook

Moderator: Wynn Kiyama, Oregon Buddhist Temple

For registration

<https://forms.gle/kkug16Y9bGuzA6Ye8>

Hosted by the BCA Executive Committee



## **INNOVATIONS & CHALLENGES with TAIKO ONLINE**

April 3, 2021 • 11:00 am – 12:15 pm PST

Featuring short presentations by four taiko leaders followed by an open forum to share ideas and resources.

### **Panelists:**

**Johnny Mori**, Senshin Buddhist Temple  
**Elise Fujimoto**, Mountain View Buddhist Temple  
**Sydney Shiroyama**, Palo Alto Buddhist Temple  
**Paul Sakamoto**, Puna Hongwanji Mission

**Moderator: Tyler Moriguchi, Seattle Betsuin Buddhist Temple**

For registration  
<https://forms.gle/5AvJfviLkbbjzznt6>

Hosted by the BCA Executive Committee



# CBE SEMINARS ONLINE FOR ALL

FREE & OPEN TO THE PUBLIC - REGISTER FOR ZOOM LINK

*\*Pacific Time - Check local time zone*

SATURDAY, APRIL 10, 5 PM - 6:30 PM (\*PACIFIC)

## SOCIALLY ENGAGED BUDDHISM:

### Jodo Shinshu Perspectives

What is “Socially Engaged Buddhism”? What are some examples of Buddhist social engagements in Japan and elsewhere? How do we apply the idea of socially engaged Buddhism to a Jodo Shinshu life guided by the Nembutsu ?

#### Guest Speakers:

#### Prof. Mitsuya Dake

Graduate School of Intercultural Communications,  
Ryukoku University, Kyoto, Japan



Prof. Dake is on the faculty of Ryukoku University’s Graduate School of Intercultural Communications, and is director of its Center for the Studies of South Asia. He received his masters degree from Ryukoku and has completed his Ph.D. courses for literature. His areas of research include: Shinran

Thought; Engaged Buddhism; and Inter-faith Dialogue. He serves on the editorial board of the journal, *Contemporary Voices of Dalit*.

#### Rev. Kiyonobu Kuwahara

Supervising Minister, Berkeley Buddhist Temple  
Manager, Jodo Shinshu International Office



Rev. Kuwaharahas a master’s degree in Jodo Shinshu Studies from the Institute of Buddhist Studies and Ryukoku University, and completed the Ryukoku Ph.D. program in Jodo Shinshu studies. He has also served as co-director of the BCA Center for Buddhist

Education; coordinator for the Hongwanji Office of the BCA Jodo Shinshu Center; and staff member of the International Department of the Jodo Shinshu Hongwanji-ha.

**REGISTER ONLINE ~ FREE**

<https://forms.gle/dtkiF6w47Fz4TpCN9>

**DONATIONS GRATEFULLY ACCEPTED - [CLICK TO DONATE](#)**

<https://bca.kindful.com/campaigns/232361?utf8=%E2%9C%93&campaigns=232361&amount=>

VISIT: [BUDDHISTCHURCHESOFAMERICA.ORG](http://BUDDHISTCHURCHESOFAMERICA.ORG)

EMAIL: [CBE@BCAHQ.ORG](mailto:CBE@BCAHQ.ORG)

TEL: 510.809.1460



# CBE SEMINARS ONLINE FOR ALL

FREE & OPEN TO THE PUBLIC - REGISTER FOR ZOOM LINK

*\*Pacific Time - Check local time zone*

SATURDAY, APRIL 17, 2021 11 AM - 1 PM\*

## What is the Future of Jodo Shinshu Buddhism in the West?

*namo  
amida butsu  
namo amida butsu*

GUEST SPEAKERS: THREE BISHOPS

HAWAII



REV. ERIC  
**MATSUMOTO**  
BISHOP,  
HONPA HONGWANJI  
MISSION OF HAWAII

BCA



REV. MARVIN  
**HARADA**  
BISHOP,  
BUDDHIST CHURCHES  
OF AMERICA  
(NORTH AMERICA DISTRICT)

CANADA



REV. TATSUYA  
**AOKI**  
BISHOP,  
JODO SHINSHU  
BUDDHIST TEMPLES  
OF CANADA

**REGISTRATION - Free** CLICK TO REGISTER: <https://forms.gle/1egQ3umNGki4xf1J7>

DONATIONS GRATEFULLY ACCEPTED CLICK TO DONATE

<https://bca.kindful.com/campaigns/232361?utf8=%E2%9C%93&campaigns=232361&amount=>

Visit: [buddhistchurchesofamerica.org](http://buddhistchurchesofamerica.org) email: [cbe@bcahq.org](mailto:cbe@bcahq.org) tel: 510.809.1460

# BYR MIDDLE SCHOOL YOUTH EVENT

APRIL 24th, 2021

2pm - 4pm (PST)



\*Virtual Zoom Session

\*Watch a special interview with Cathy Ang, who played the character Fei Fei in the Netflix animated movie "Over The Moon"

\*Make new friends

\*Learn about Buddhism in a fun way

\*Please share this flyer



**Register Here:** <https://bit.ly/3s7npRz>

**Got Questions?:** [bkmizushima@bcahq.org](mailto:bkmizushima@bcahq.org)

## Services

Our regular Sunday program begins with a Chanting Service at 8:30am followed by a Family Service at 9:30am. A Dharma talk is available after the Family Service while Dharma School classes are convened for students.

### Special Services

January 1	Gantan-e	New Year's Day Service
February	Nehan-e	Nirvana Day
March	Ohigan	Spring Equinox
April	Hanamatsuri	Flower Festival
May	Gotan-e	Birthday of Shinran
July	Kangi-e	Obon
September	Ohigan	Autumn Equinox
November	Hoonko	Shinran Shonin Memorial
December	Jodo-e	Bodhi Day
December 31	Joya-e	Year End Service

A Shotsuki Hoyo (Monthly Memorial) Service is held the first Sunday of each month.

## Dharma School

Our Dharma School (Sunday School) has classes from preschool through high school. Our teachers are happy to discuss the appropriate level of spiritual enrichment for your student.

## Monthly Discussions

In our discussions, we strive to experience the Buddha-Dharma with our entire selves – with our bodies (quiet sitting and other forms of meditation), voices (chanting and other liturgy) and minds (study and discussion).

Our sessions focus on ways in which Buddhist teaching and practice can impact our everyday lives. Each session will take up a different topic and you are welcome to attend any or all sessions.

All interested persons are welcome to attend.

## Visitor Information

Please feel free to ask any of our greeters for information. We are here to assist you with whatever level of participation you may be seeking.

Whether you are here to satisfy a slight interest or to make a more personal connection, we wish you well and hope that you will be visiting us again soon.

## Membership Information

Membership is open to all who view the Temple as their spiritual home and seek the Buddha-Dharma.

Kindly complete a [Membership Form](#), have your name entered in the membership roll and support the Temple through a pledge and participation.

For more information about becoming a member, visit our [Registration](#) page, or contact our [Membership Chair](#).



### Berkeley Buddhist Temple

2121 Channing Way  
Berkeley, CA 94704

Office Hours  
Monday – Friday  
10:00am – 1:00pm

510-841-1356

[info@berkeleybuddhisttemple.org](mailto:info@berkeleybuddhisttemple.org)

[berkeleybuddhisttemple.org](http://berkeleybuddhisttemple.org)

[facebook.com/berkeleybuddhisttemple](https://facebook.com/berkeleybuddhisttemple)

[youtube.com/berkeleybuddhisttemple](https://youtube.com/berkeleybuddhisttemple)